

## RUNNING EM IN THE CLOUD

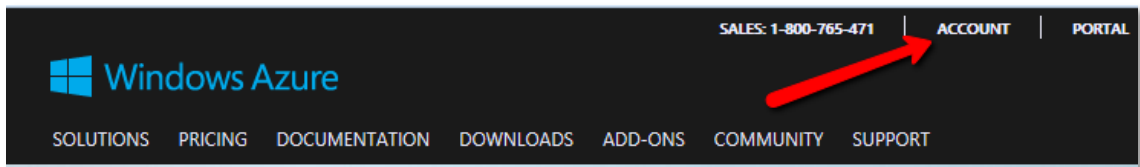
### CREATING A VIRTUAL MACHINE ON AZURE TO RUN ESTATE MASTER

#### INTRODUCTION

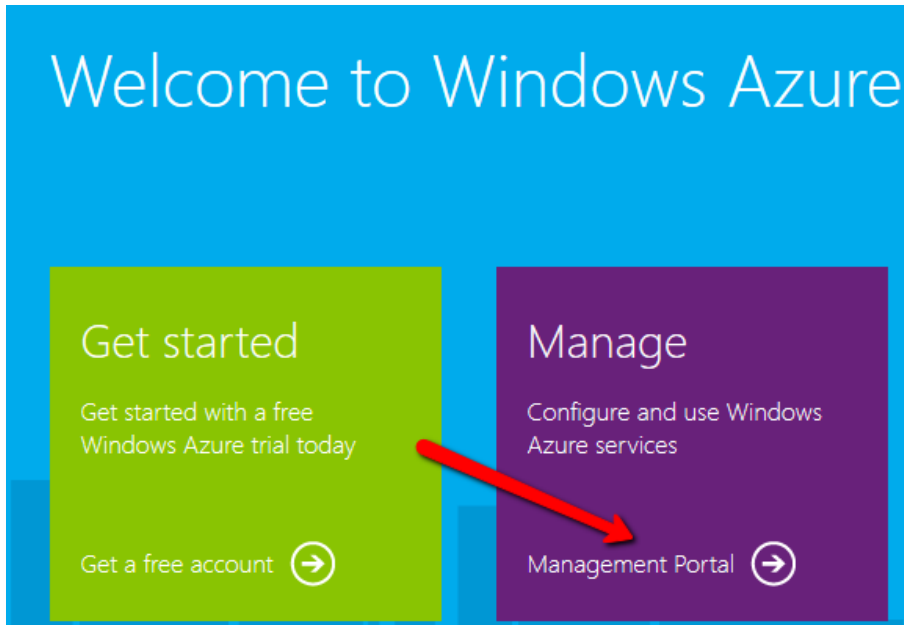
The purpose of this document is to guide a user through the process of creating a Virtual Machine in their Windows Azure account, stepping through the default choices to create a basic machine capable of running the Estate Master software, and also how to configure it so that the user can download and install the Estate Master software from the Estate Master website.

## GETTING STARTED

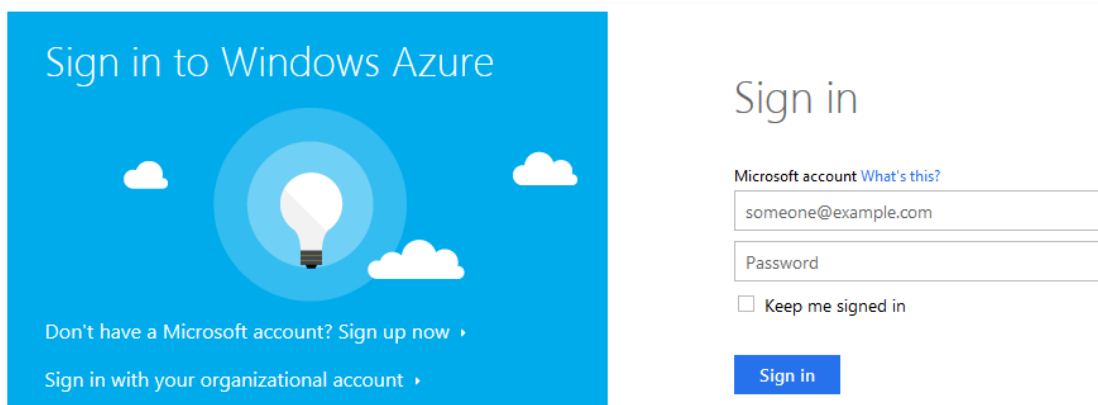
1. Head to <http://www.windowsazure.com>
2. Click on [Account]



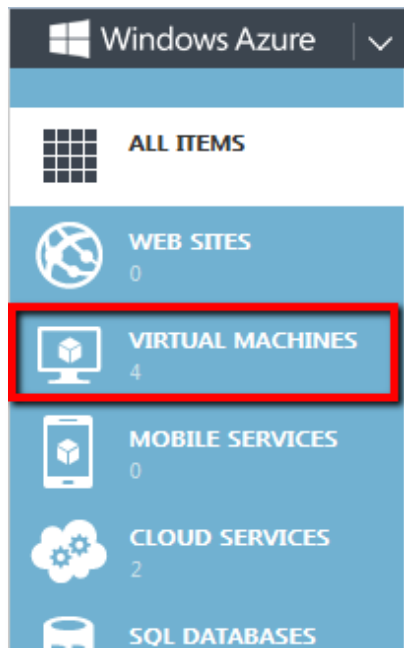
3. Then click on [Management Portal]



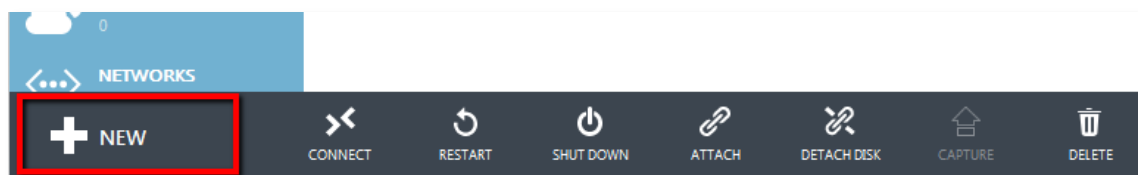
4. Login to Azure (as you should already have an account set up)



5. In the management portal on the left, select [Virtual Machines]



6. Once this screen loads, click [+NEW] on the bottom left of the screen



7. Click on [Virtual Machine], then select [Quick Create], and complete the form:
- Enter a **DNS Name** (a name for your virtual machine)
  - Select the **Image** and **Size**. We recommend you select **Windows Server 2008 R2** and the Size as **Small** or **Medium**
  - Enter the **Username** and **Password** details (this will be the user's Windows credentials to log on to the virtual machine)
  - Select the **Region** in which this virtual machine will be provisioned (select the closest region to your own location).

When done, click on [Create a Virtual Machine]

NEW

WEB SITE

VIRTUAL MACHINE

MOBILE SERVICE

CLOUD SERVICE

QUICK CREATE

FROM GALLERY

DNS NAME

.cloudapp.net

IMAGE

Windows Server 2008 R2

SIZE

Small (1 core, 1.75 GB)

USER NAME

NEW PASSWORD

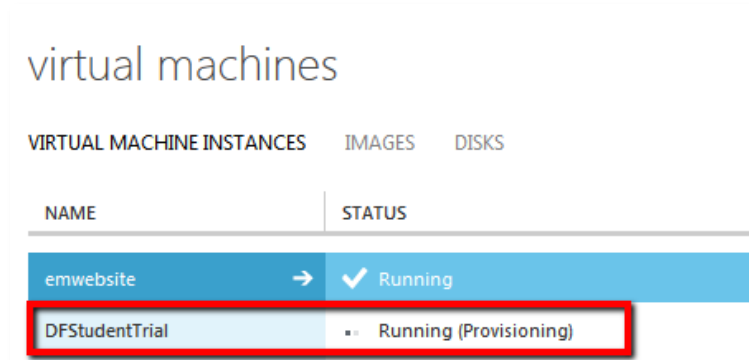
CONFIRM

REGION/AFFINITY GROUP

Southeast Asia

CREATE A VIRTUAL MACHINE

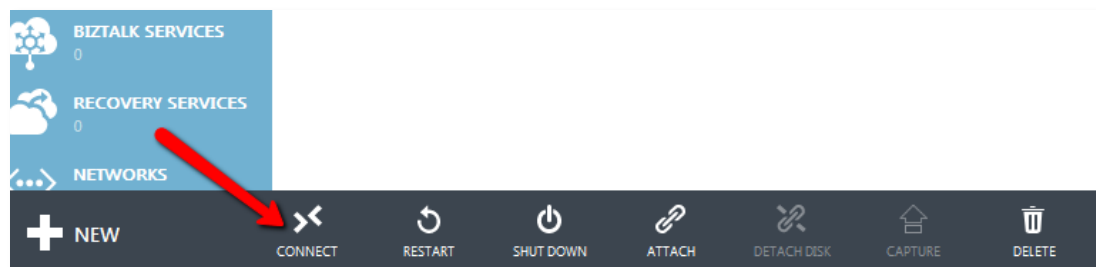
8. You will now be back at the console screen, with the machine status as 'Provisioning'.



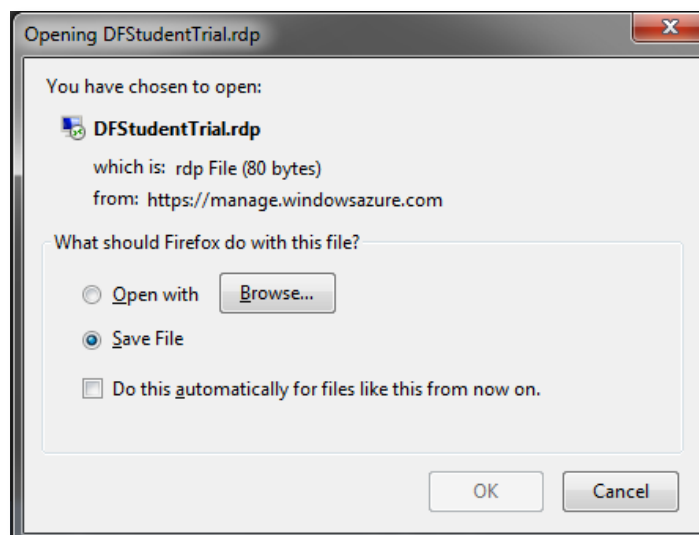
9. You will have to wait until this has completed (will take a few minutes). Once done the status will change to 'Running'



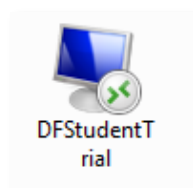
10. Click on the machine to make it highlighted as in the image above, then click on [Connect] at the bottom of the screen.



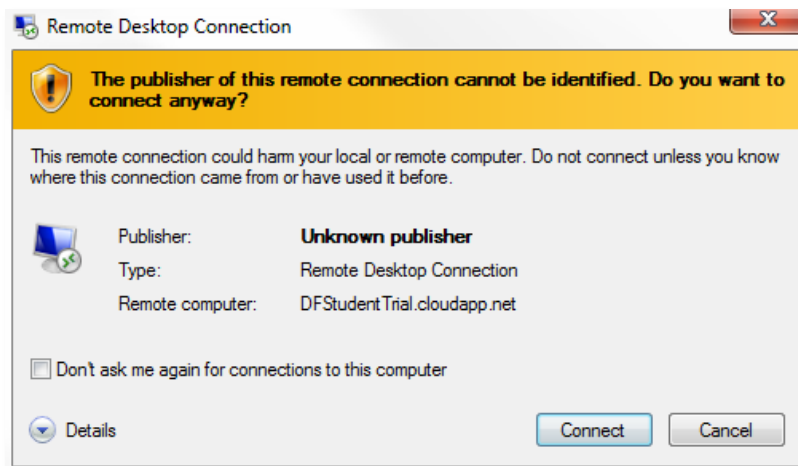
11. This will generate the Remote Desktop link to access the machine



12. Save this file to your PC. As long as the machine is in a 'Running' state on Azure, you can simple click on the Icon to launch the remote connection. Double-click the RDP icon;



13. In the Remote Desktop Connection dialog, click on [Connect]

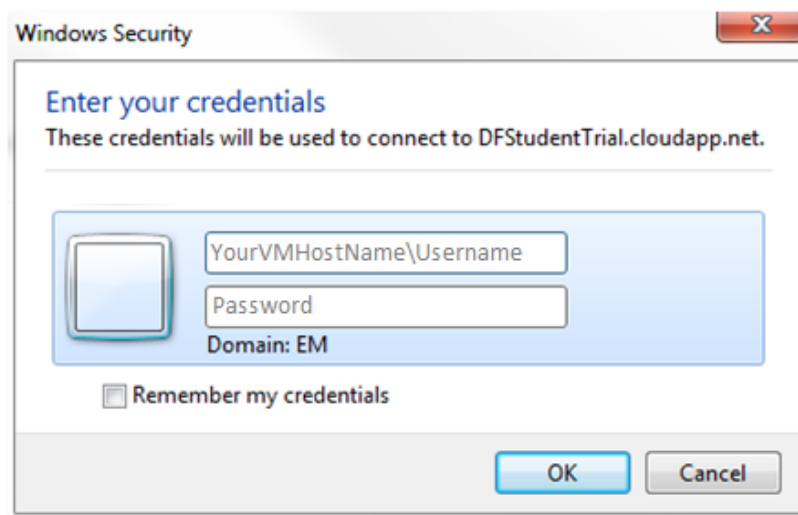


14. You will need to login using the Username and Password entered during the virtual machine setup on Azure (step 7).

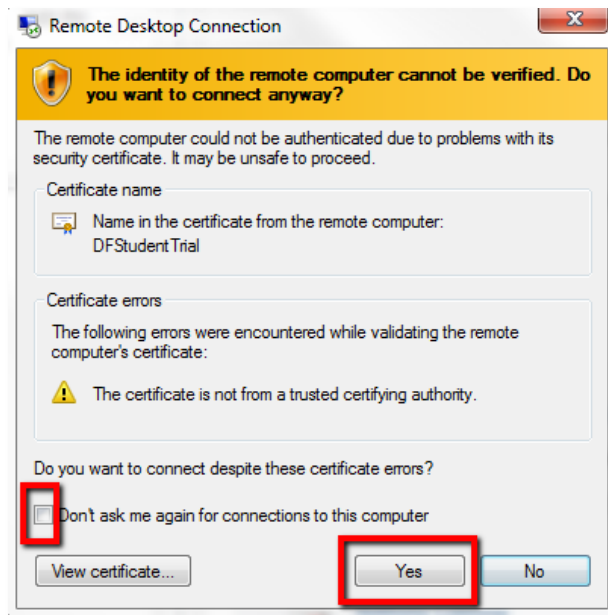
**ⓘ Important Note:** By default, Windows will default to your local domain. In order to correctly log onto the virtual machine, you will need to overwrite this by entering your username as:

**<virtual machine host name>\<Username>**

Where 'Virtual Machine Host Name' is the DNS Name entered in Step 7.

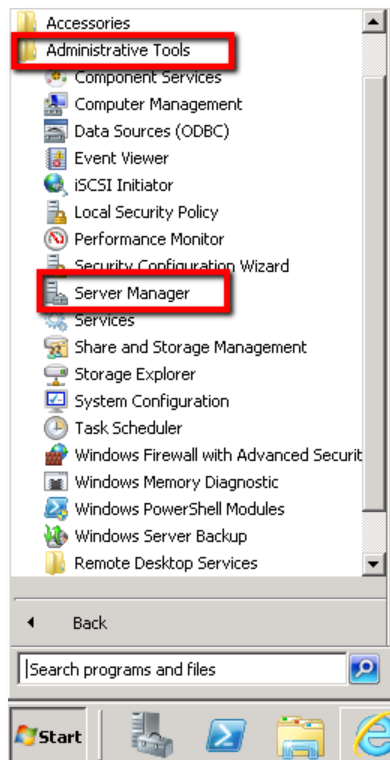


15. The machine will then try to connect, however there will be a popup regarding the verification of the machine. Check the box at the bottom saying 'Don't ask me again' and then click [Yes] to connect to your machine.

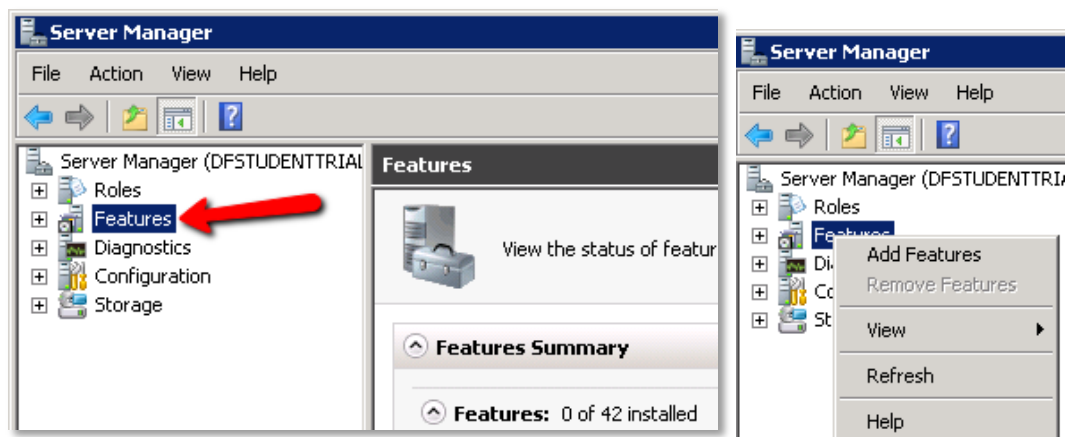


## CONFIGURING YOUR VIRTUAL MACHINE

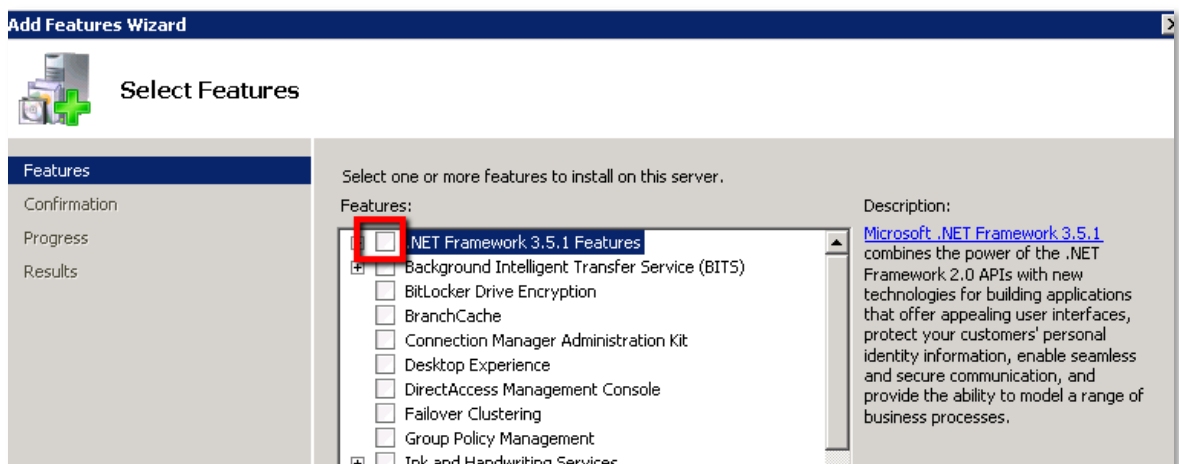
1. Click on the Windows [Start] button, and click [Administrative Tools > Server Manager]



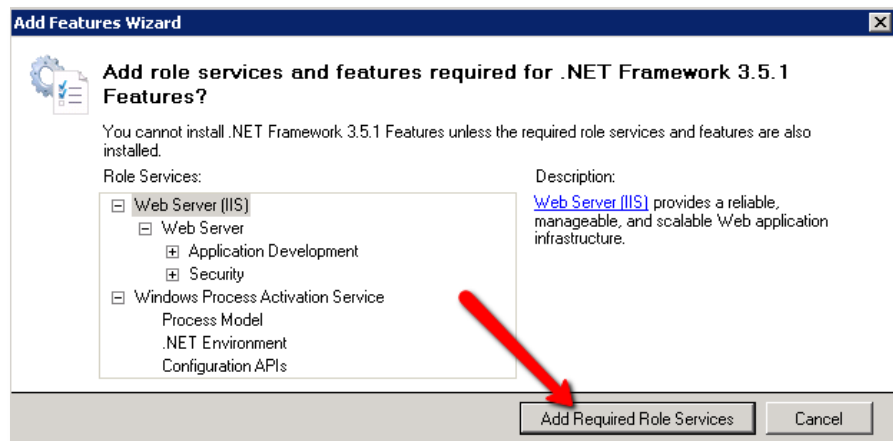
2. Right-click on [Features] in the menu on the left, and select [Add Features]



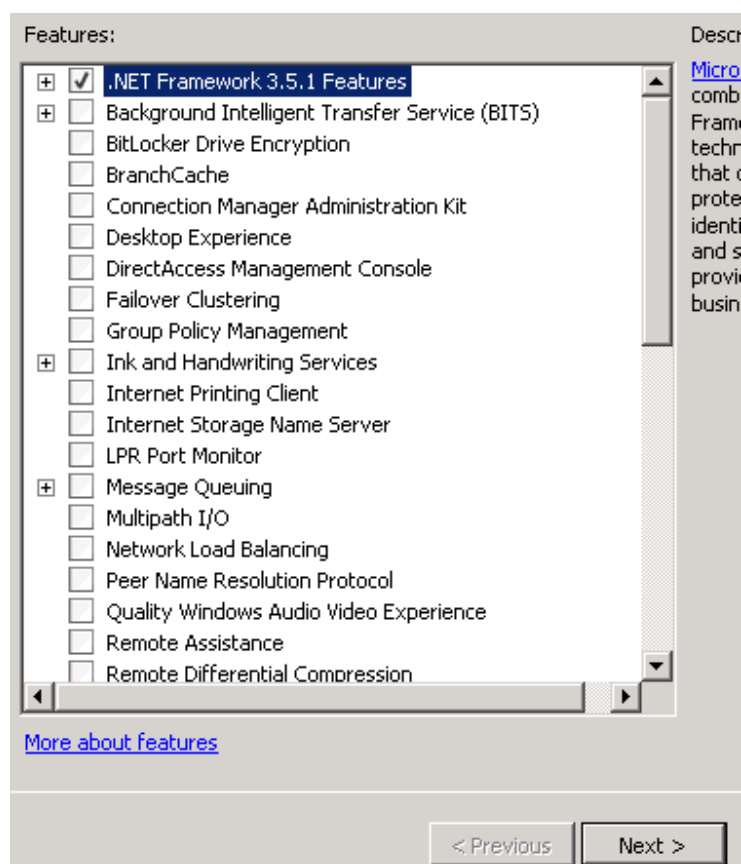
3. Select the '.NET frameworks 3.5.1' Feature



4. Then select [Add Required Role Services]

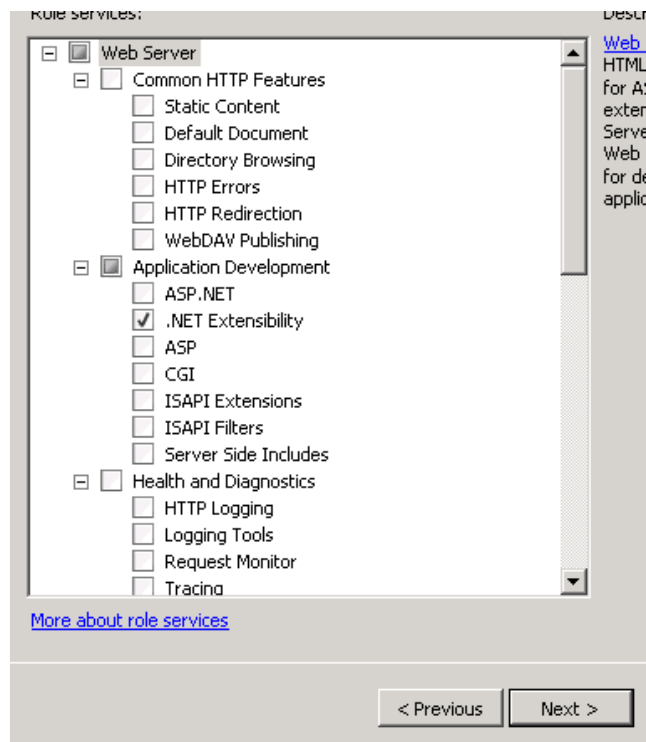


5. Click [Next]

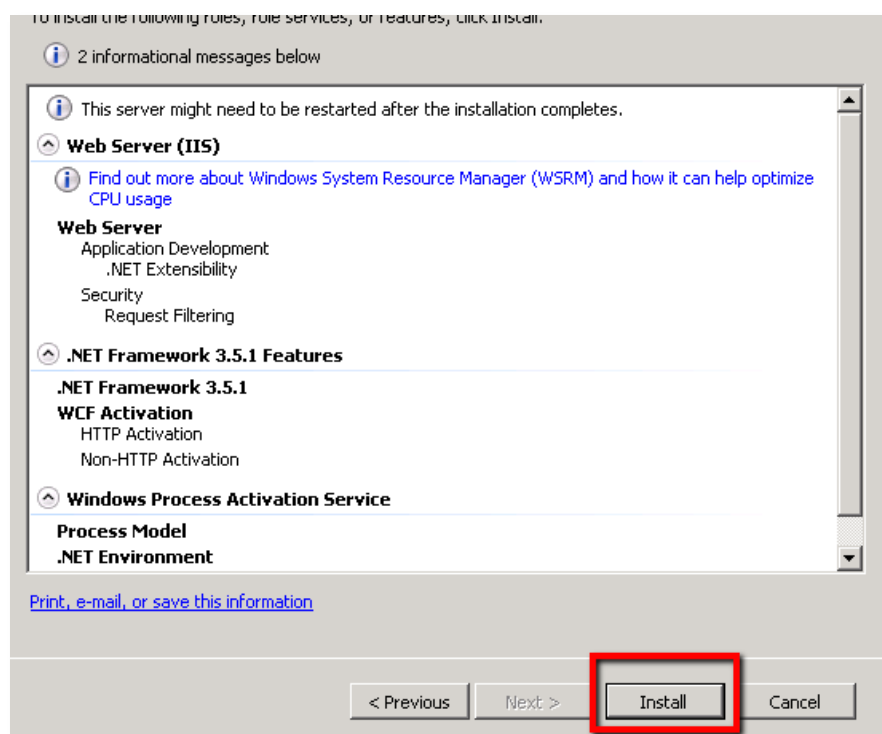




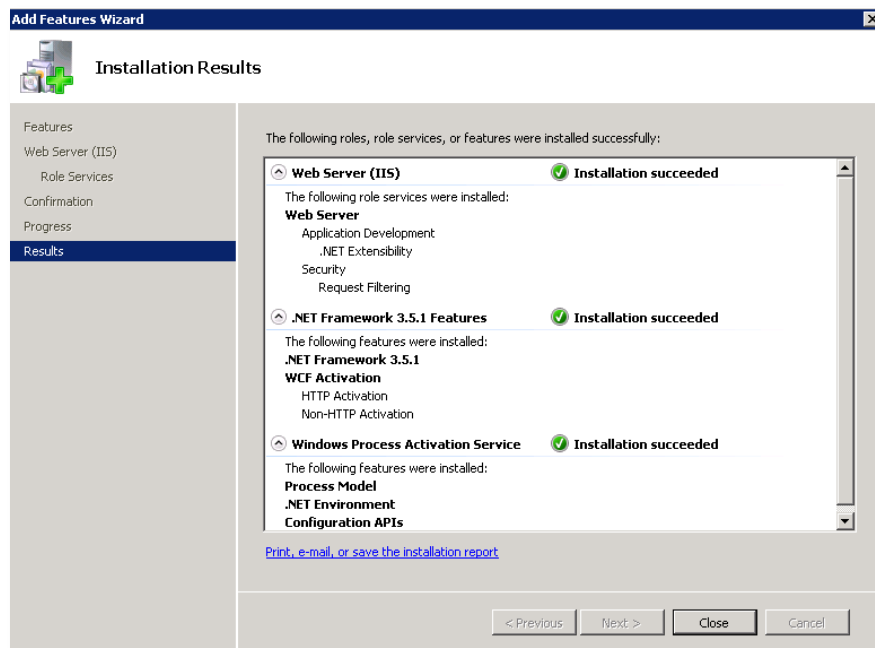
6. Click [Next] again



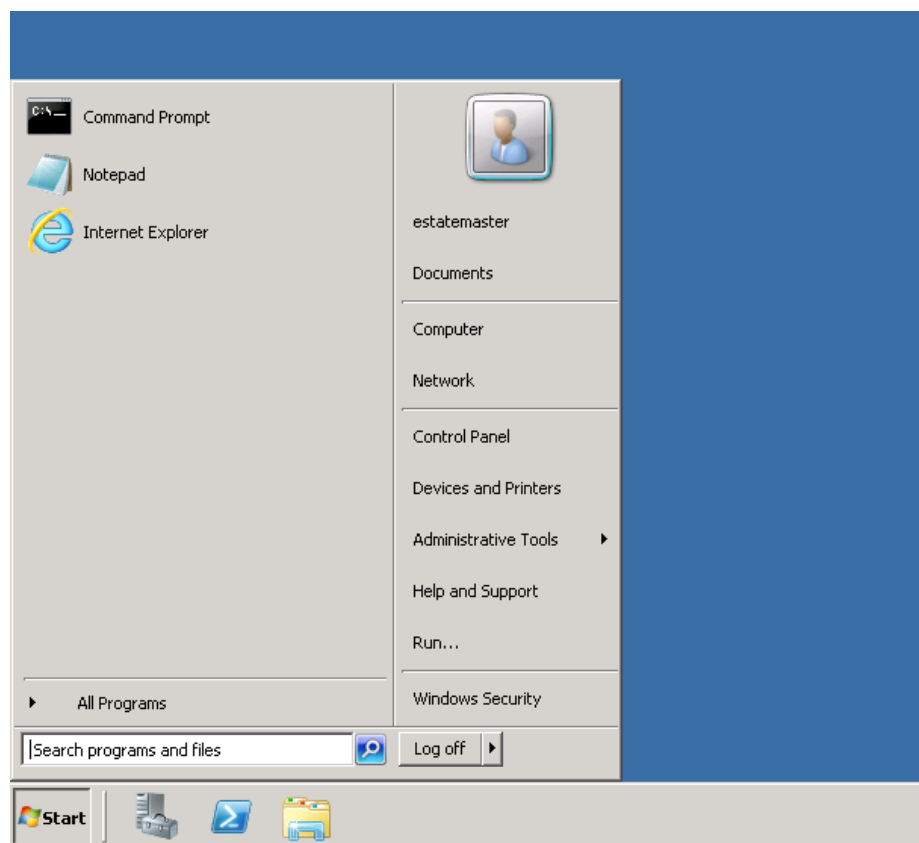
7. Then click [Install]



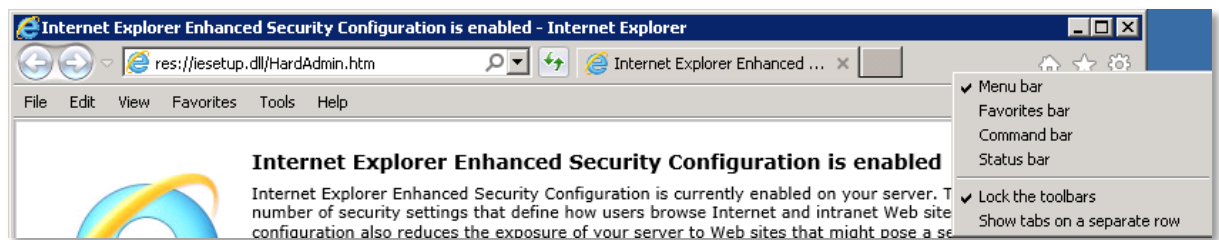
8. Once this has installed, click [Close]



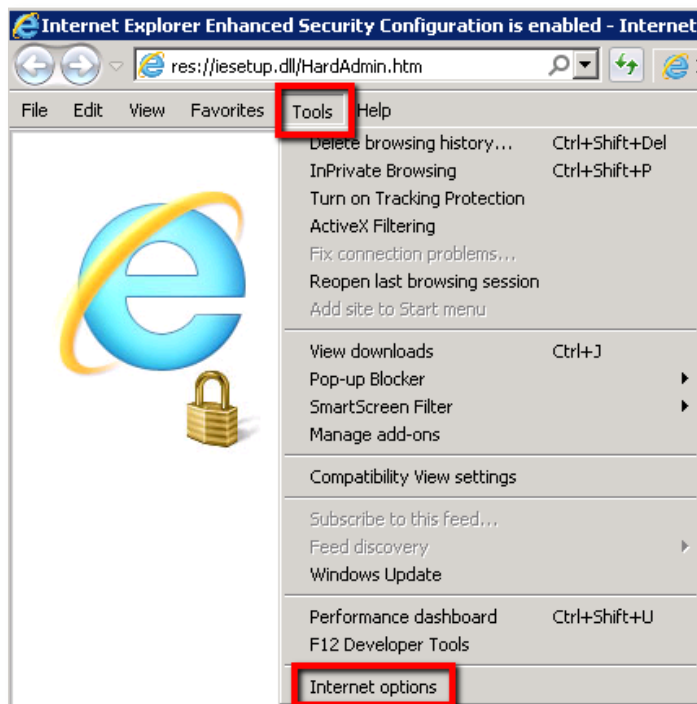
9. This has activated a pre-requisite for our software running. Once done, click on Windows [Start], and open Internet Explorer.



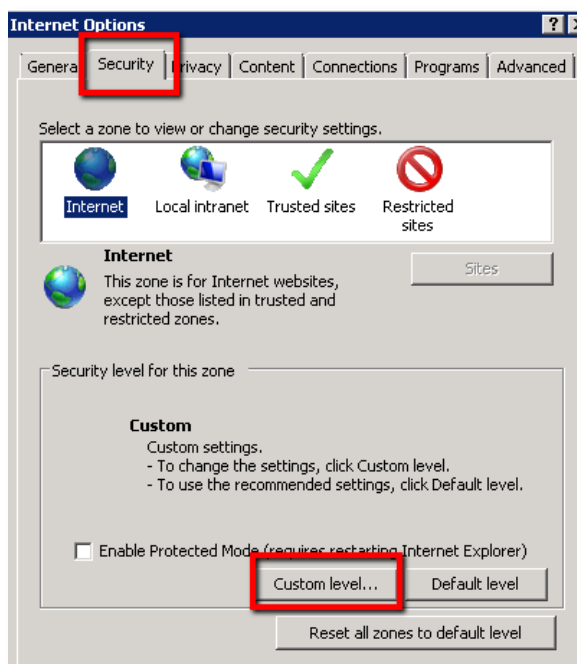
10. Once IE is loaded, right click on the grey bar next to the open tab, and select [Menu Bar] to have the IE menu displaying



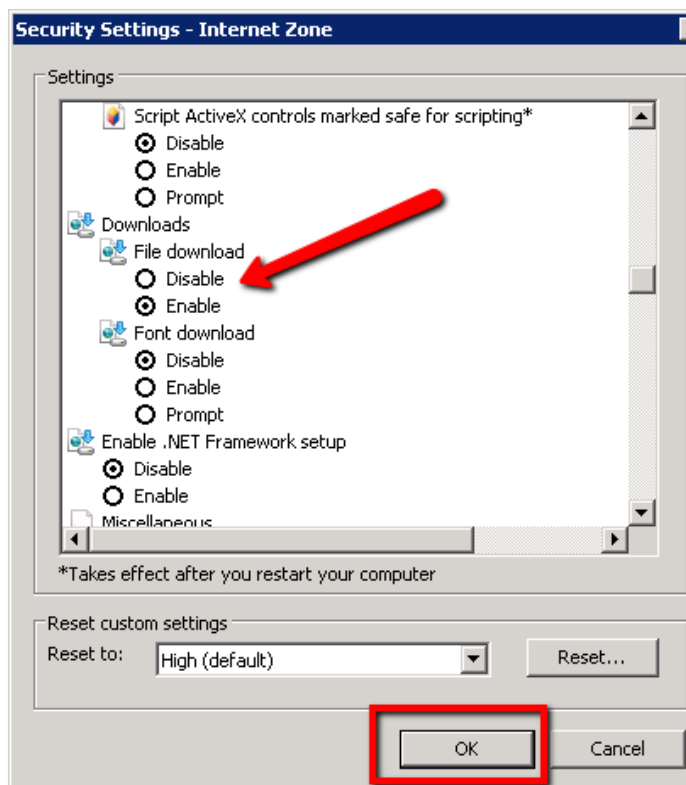
11. Once you can see the menu, select [Tools > Internet Options] from the drop-down menu.



12. Click on the [Security] Tab, and then select [Custom Level]



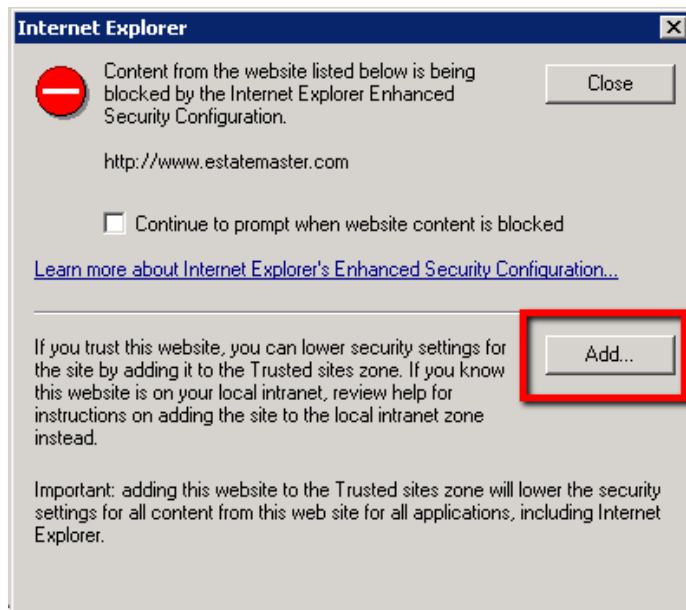
13. Scroll down this list until you get to the 'Downloads' section. For 'File Download' select [Enable], and then press [OK]



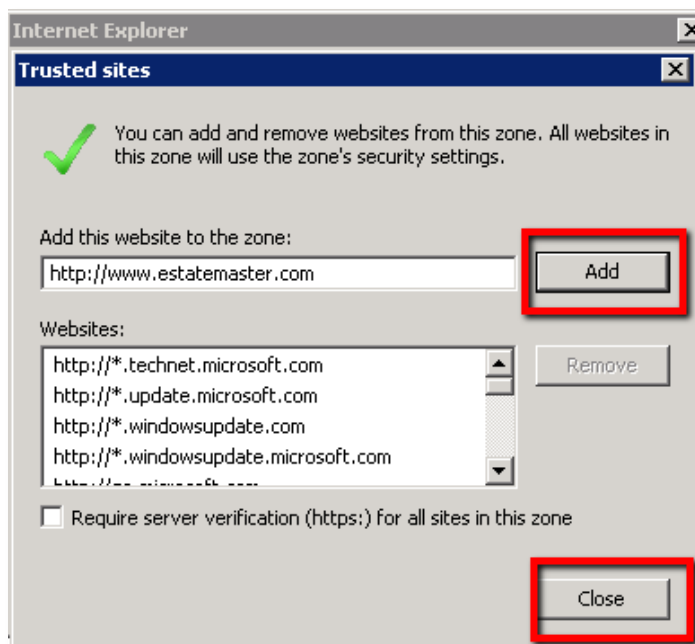
14. Press[ OK] again to close these options.

## DOWNLOADING AND INSTALLING THE ESTATE MASTER SOFTWARE

1. Go to the Estate Master website (<http://www.estatemaster.com>) - by default the internet security is quite high on these machines, so when then below message appears, select [Add] to add the Estate Master website as a 'Trusted Site'.



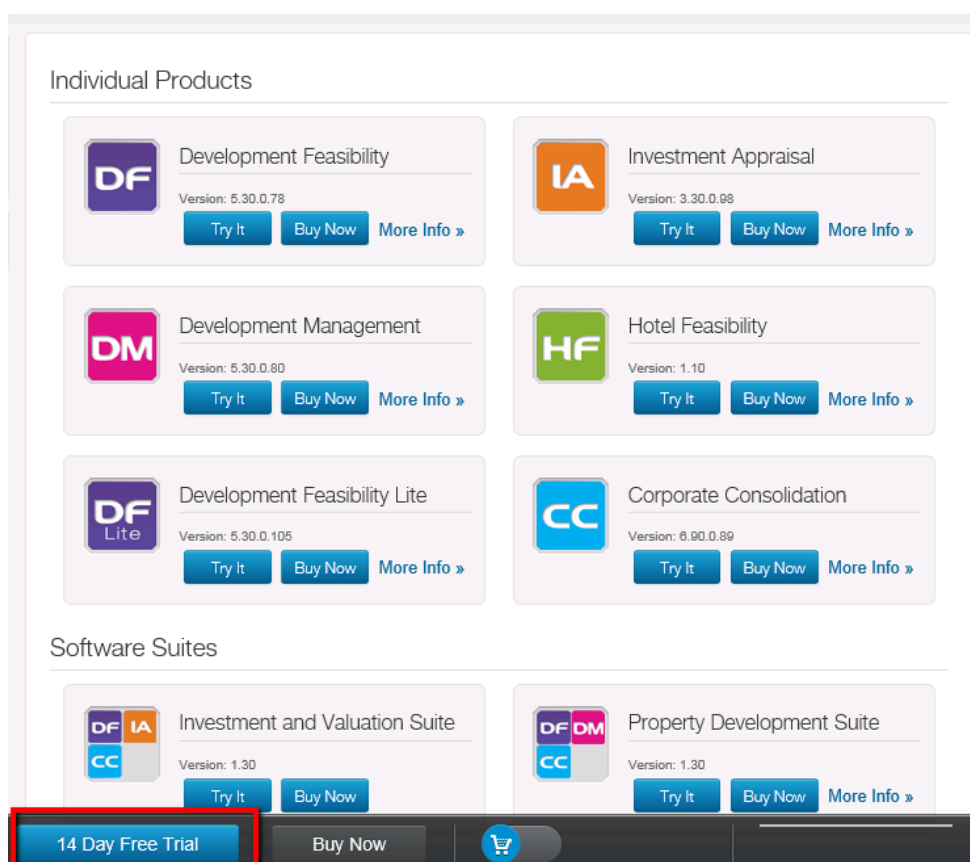
2. When the configuration screen appears, click on [Add], then [Close]. (This process will be needed to be repeated 3 times for the first 3 popup warnings)



3. If this message pops up again after this, un-check the [Continue to prompt] option, and select [Close]



4. You can now download the required software onto this machine and install it as per normal with any normal PC. Click on the [14 day Trial] button along the bottom of the website and select the 'Try It' button associated with the desired software. Follow all the necessary steps to download the installer on your virtual machine (Please do not close the Estate Master website).

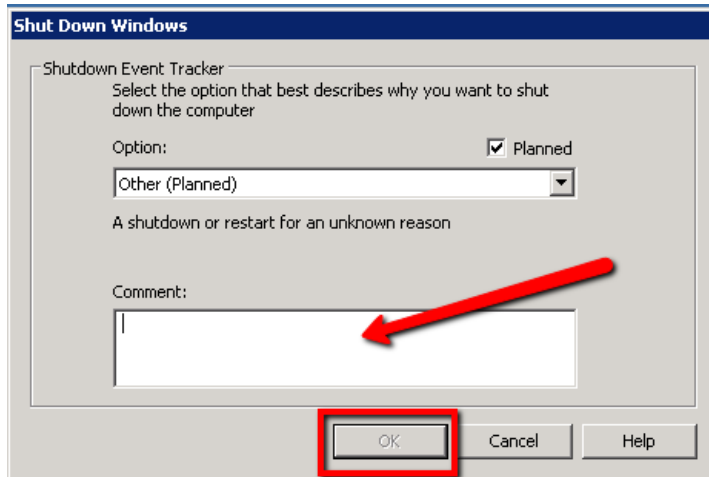


5. Double click and run the saved installation file on your virtual machine to install the Estate Master software.
6. Once this has been done, you will need to contact the Estate Master Support Team via [support@estatemaster.com](mailto:support@estatemaster.com) as they will need to remote onto your machine and register your software for you.

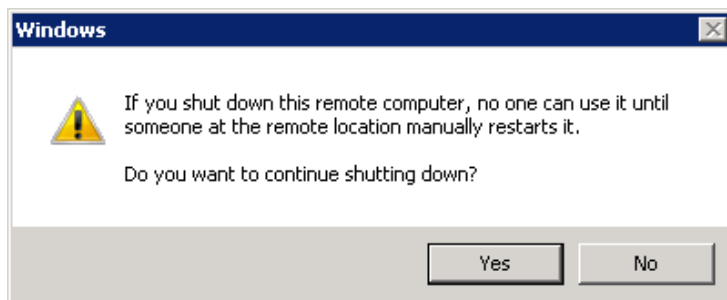
## IMPORTANT NOTES

### SHUTTING DOWN WINDOWS

When you are finished using your Virtual Machine, log out as you would any normal PC (by shutting it down via the Windows Start button and selecting [Shut Down]). A popup will appear; simply enter any text in the comments field, and click [OK].



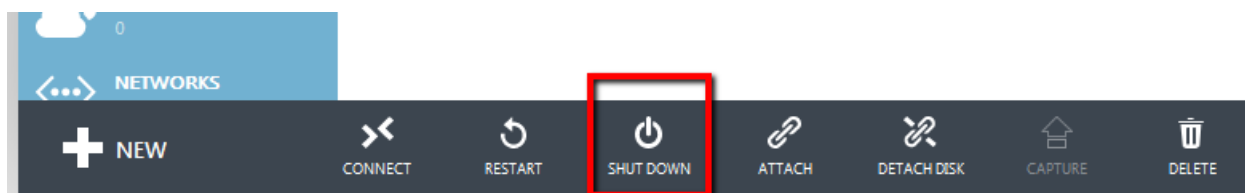
Then click [Yes] to the warning message regarding the machine being restarted next time.



The machine will still be in a **Running** state and as such, accruing usage charges on a per hour basis. You can at any time however, reconnect to the virtual machine at any time via the RDP link saved on your machine (as shown above).

### SHUTTING DOWN THE VIRTUAL MACHINE

To minimise costs, you can log onto your Azure Management Console, select the applicable virtual machine, and select [Shut Down] from the menu options at the bottom of the screen to stop the machine running.



This will stop the machine running, and therefore stop usage charges, however the next time you wish to connect to this machine, you will need to first log in to the Azure Management Console, and restart the machine in the console first (by clicking on the machine in the list and clicking [Restart]), and only once the machine is up and running, can you connect to it.